

Project Update

ConocoPhillips Australia is planning to undertake exploration activities in offshore permits VIC/P79 and T/49P located in Commonwealth waters. The proposed activities are a continuation of ConocoPhillips Australia's exploration program in the offshore Otway Basin which aims to identify commercially viable natural gas reserves to help meet Australia's energy needs.

About the Otway Exploration Drilling Program

ConocoPhillips Australia is proposing to undertake an exploration program that consists of seabed surveys and the drilling of up to six exploration wells in exploration permits VIC/P79 and T/49P located in Commonwealth waters offshore of Victoria and King Island, Tasmania.

ConocoPhillips Australia has commenced preparation of an Environment Plan (EP) that will seek approval for this exploration drilling program to be undertaken. Drilling commencement is dependent on regulatory approval and rig availability. The initial activity will be a vessel-based seabed survey that will commence no earlier than January 2024.

This information sheet summarises the next phase of Environment Plan development and consultation, where we will share our evaluations of environmental impacts and risks.

We also have an online mapping tool where individuals, organisations and associations can continue to share feedback about environmental values and sensitivities.

How to Participate in the Regulatory Approvals Process

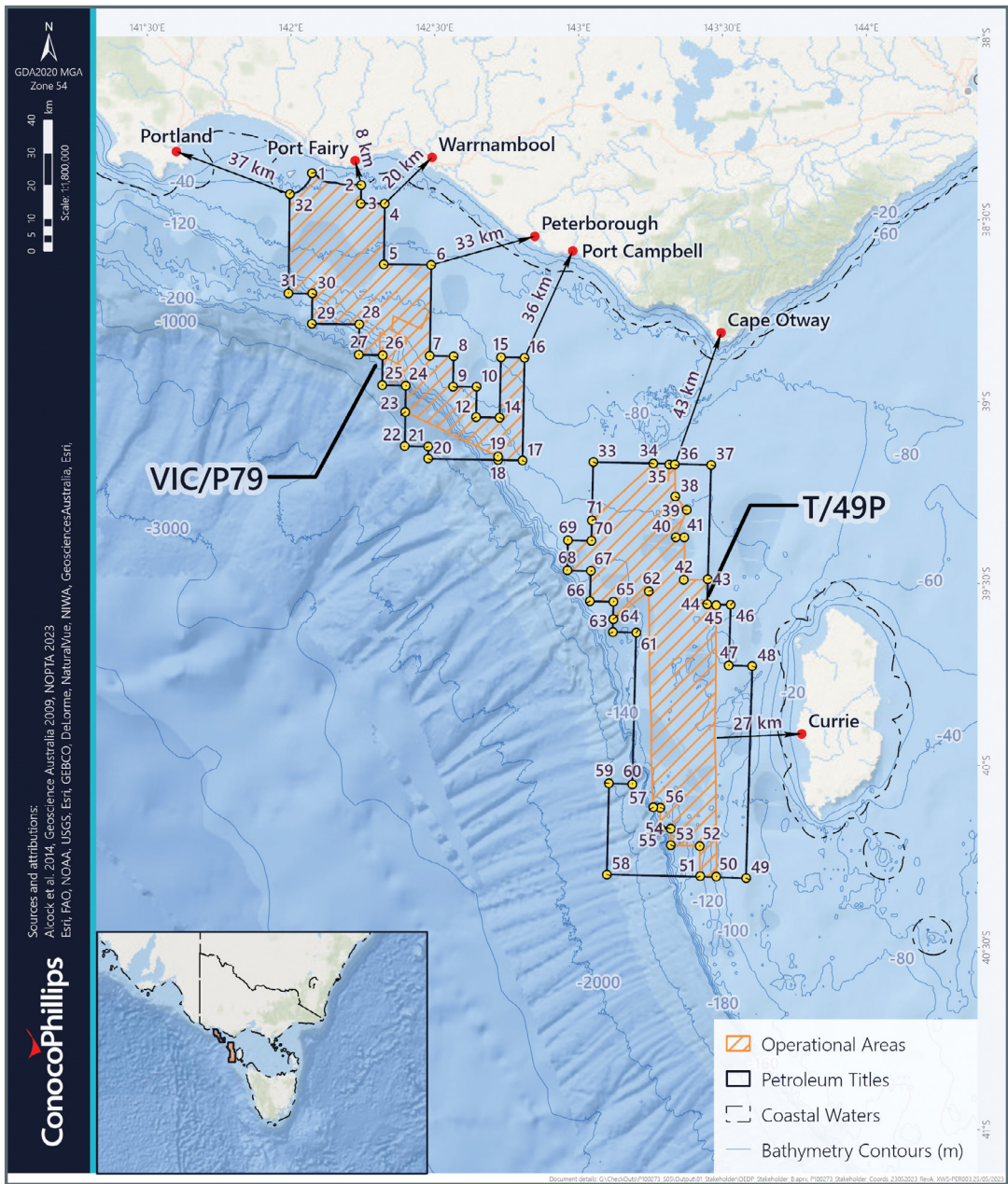
NOPSEMA has recently published a brochure with information for the community about consultation on offshore petroleum environment plans. The brochure has excellent information to help you or your organisation decide if you are a relevant person and can be found [here](#). We strongly encourage those of you uncertain about whether you are a relevant person to consider this information.

If you believe you are a relevant person, we need to understand your activities or interests so that we can provide the right information to you. When engaging with our team we encourage you to be specific about how you might potentially be affected, so that we can properly consider how we might avoid or lessen those impacts or risks.

KEY INFORMATION

- ConocoPhillips Australia is planning to undertake an exploration drilling program in the Otway Basin and is preparing an Environment Plan (EP) which will be submitted to the National Offshore Petroleum Safety and Environmental Management Authority (NOPSEMA) for public comment and assessment. Any decision to proceed to development will be dependent on a conducive investment environment.
- A range of information sheets providing information on the evaluation of environmental impacts and risks has been developed to support consultation.
- ConocoPhillips Australia is now looking for feedback on these evaluations.
- Individuals, organisations and associations continue to be able to share feedback on locations with values and sensitivities through an online interactive map via the consultation hub.

Map of Permit and Operational Areas



Coordinates

Label	Latitude (DMS)	Longitude (DMS)	Label	Latitude (DMS)	Longitude (DMS)	Label	Latitude (DMS)	Longitude (DMS)	Label	Latitude (DMS)	Longitude (DMS)
1	-38° 25' 3.131"	142° 4' 39.232"	20	-39° 11' 54.708"	142° 30' 4.951"	37	-39° 11' 54.664"	143° 30' 4.89"	54	-40° 12' 5.982"	143° 23' 34.74"
2	-38° 26' 53.079"	142° 15' 4.888"	21	-39° 9' 54.707"	142° 30' 4.949"	38	-39° 17' 17.3"	143° 22' 41.264"	55	-40° 12' 7.05"	143° 21' 24.852"
3	-38° 29' 54.69"	142° 15' 4.894"	22	-39° 9' 54.71"	142° 25' 4.953"	39	-39° 19' 27.132"	143° 25' 13.929"	56	-40° 8' 39.816"	143° 21' 12.975"
4	-38° 29' 54.686"	142° 20' 4.889"	23	-39° 4' 14.315"	142° 25' 4.946"	40	-39° 24' 0.371"	143° 23' 0.444"	57	-40° 8' 39.34"	143° 19' 41.017"
5	-38° 39' 54.694"	142° 20' 4.908"	24	-38° 59' 54.705"	142° 25' 4.938"	41	-39° 23' 55.841"	143° 24' 47.592"	58	-40° 19' 54.707"	143° 10' 4.993"
6	-38° 39' 54.686"	142° 30' 4.896"	25	-38° 59' 54.709"	142° 20' 4.943"	42	-39° 30' 55.847"	143° 24' 57.913"	59	-40° 4' 54.701"	143° 10' 4.976"
7	-38° 54' 54.697"	142° 30' 4.924"	26	-38° 54' 54.706"	142° 20' 4.935"	43	-39° 30' 47.539"	143° 30' 1.633"	60	-40° 4' 54.697"	143° 15' 4.971"
8	-38° 54' 54.693"	142° 35' 4.918"	27	-38° 54' 54.711"	142° 15' 4.94"	44	-39° 34' 54.676"	143° 30' 4.921"	61	-39° 39' 54.688"	143° 15' 4.942"
9	-38° 59' 54.697"	142° 35' 4.927"	28	-38° 49' 54.706"	142° 15' 4.932"	45	-39° 35' 2.601"	143° 31' 58.008"	62	-39° 33' 0.546"	143° 17' 31.908"
10	-38° 59' 54.693"	142° 40' 4.921"	29	-38° 49' 54.714"	142° 5' 4.941"	46	-39° 34' 54.673"	143° 35' 4.905"	63	-39° 39' 54.691"	143° 10' 4.947"
12	-39° 4' 54.696"	142° 40' 4.93"	30	-38° 44' 54.71"	142° 5' 4.932"	47	-39° 44' 54.677"	143° 35' 4.906"	64	-39° 37' 47.264"	143° 10' 8.348"
14	-39° 4' 54.692"	142° 45' 4.924"	31	-38° 44' 54.713"	142° 0' 4.935"	48	-39° 44' 54.675"	143° 40' 4.882"	65	-39° 34' 54.689"	143° 10' 4.941"
15	-38° 54' 54.684"	142° 45' 4.905"	32	-38° 28' 31.755"	142° 0' 4.902"	49	-40° 19' 54.686"	143° 40' 4.966"	66	-39° 34' 54.692"	143° 5' 4.946"
16	-38° 54' 54.679"	142° 50' 4.899"	33	-39° 11' 54.684"	143° 5' 4.92"	50	-40° 19' 47.484"	143° 33' 41.868"	67	-39° 29' 54.69"	143° 5' 4.94"
17	-39° 11' 54.694"	142° 50' 4.933"	34	-39° 11' 56.572"	143° 17' 52.217"	51	-40° 19' 48.944"	143° 30' 10.185"	68	-39° 29' 54.694"	143° 0' 4.945"
18	-39° 11' 54.697"	142° 44' 55.692"	35	-39° 12' 0.644"	143° 21' 13.397"	52	-40° 14' 49.127"	143° 29' 56.024"	69	-39° 24' 54.692"	143° 0' 4.939"
19	-39° 11' 18.194"	142° 44' 49.999"	36	-39° 12' 1.03"	143° 22' 24.381"	53	-40° 14' 47.42"	143° 23' 40.631"	70	-39° 24' 54.689"	143° 5' 4.934"
									71	-39° 21' 31.898"	143° 5' 7.348"

Activity Overview

ConocoPhillips Australia is seeking to identify commercially viable natural gas reserves that can be developed to contribute towards energy security for the Australian east coast domestic market. As a titleholder, ConocoPhillips Australia has made a commitment to undertake exploration activities within timeframes agreed by the Commonwealth National Offshore Petroleum Titles Administrator (NOPTA).

ConocoPhillips Australia is proposing to undertake an exploration program that consists of seabed surveys and the drilling of up to six exploration wells in exploration permits VIC/P79 and T/49P, located in Commonwealth waters offshore of Victoria and King Island, Tasmania, as outlined below.

Parameter	Seabed Survey	Drilling
The broadest timeframe and spatial extent of the activity		
Earliest start date	1 January 2024	1 October 2024
Latest finish date	31 December 2028	31 December 2028
Maximum number of locations	9 (to support confirmation of final drilling locations)	6 (2 firm wells and up to 4 optional wells).
Spatial extent (within which activity can occur)	Operational Areas within T/49P and VIC/P79	Operational Areas within T/49P and VIC/P79
Narrowing the timing and location of the activities to the current best estimates		
Maximum duration	1 week per seabed survey location	Up to 90 days of drilling per location
Spatial extent (within which activity can occur)	324 km ² (Nine locations, each 6 x 6 km) within Operational Areas	75 km ² (Six locations, each a 2 km radius Drilling Area) within Operational Areas

Identifying Environmental Values and Sensitivities

To support our understanding of the marine environment of the offshore Otway Basin, ConocoPhillips Australia is inviting individuals, organisations and associations to provide additional context and feedback on our proposed activity through an online collaborative mapping process.

Individuals, organisations and associations are encouraged to visit the consultation hub and use the interactive map to identify (pin) locations of interest or concern and provide additional information or comment on existing pins.

Environmental values and sensitivities can be physical, ecological, socio-economic and/or cultural.



Commercial Fishing

The Otway Exploration Drilling Program is located within existing designated Commonwealth and State fisheries. Exploration drilling activities will occur in only very small areas within the fisheries area.

Specific locations for seabed surveys and exploration drilling are yet to be confirmed. ConocoPhillips Australia has undertaken to assess the environmental impacts and risks associated with seabed surveys and drilling activities that may occur anywhere within broader operational areas within petroleum titles T/49P and VIC/P79. This ensures that the impacts and risks associated with all potential survey and drilling locations are assessed.

A preliminary assessment of potential impacts and risks to the commercial fishing industry has identified that:

- Commercial fishers may be temporarily displaced from parts of the fisheries during exploration activities. Any displacement, i.e. through exclusion zones, would be communicated in a timely manner.
- Impacts to fish and marine invertebrates from planned activities are predicted to be short term, limited within 10s to 100s of metres and will not affect the long-term sustainability of fisheries.
- Potential risks from unplanned events have been identified and mitigation and management measures are being developed.

The full Commercial Fishing information sheet, including examples of mitigation measures, is available in the document library of the consultation hub.

Marine Mammals

The EP will include an assessment of potential impacts and risks to marine mammals that might arise from the exploration program.

A preliminary assessment of impacts and risks to marine mammals has identified that:

- Several species of whales, dolphins and seals are typically found in the Otway Basin, many of which exhibit biologically important behaviours such as foraging.
- Marine mammals are particularly sensitive to the effects of underwater noise which has the potential to result in hearing impairment, stress and changes in behaviour at a range of effect distances.
- Where underwater noise has the potential to affect biologically important behaviours of threatened species, effective control measures will need to be in place.

Under the Environment Protection and Biodiversity Conservation Act 1999 (EPBC Act) all cetaceans (whales, dolphins and porpoises) are protected in Australian waters. There are several species of whales, dolphins and seals typically found in the Otway Basin, including species that are listed as nationally threatened under the EPBC Act including three endangered species (blue whale, southern right whale and Australian sea lion) and three vulnerable species (sei whale, fin whale and the southern elephant seal).

In addition, some species are known to undertake biologically important behaviours, such as foraging, calving and migration, within the Environmental Planning Area, including:

- Southern right whales
- Blue whales
- Humpback whales
- Sperm whales
- Indian Ocean/Indo-Pacific/spotted bottlenose dolphins, and
- Australian sea lion

The full Marine Mammals information sheet, including examples of mitigation measures, is available in the document library of the consultation hub.

Seabirds, Penguins and Marine Turtles

The EP will include an assessment of potential impacts and risks to seabirds, penguins and marine turtles that might arise from the exploration program.

A preliminary assessment of impacts and risks to seabirds, penguins and marine turtles has identified that:

- Seabirds, penguins and marine turtles are known to be sensitive to the effects of artificial light, particularly during critical behaviours such as breeding and foraging for seabirds and penguins, and nesting and hatching for marine turtles.
- Marine turtles are known to be sensitive to the effects of underwater noise. However, there are no biologically important behaviours or critical habitat essential to marine turtles identified in the area and their presence is expected to be of a transient nature.
- A number of seabird species utilise the offshore Otway Basin for biologically important behaviours such as foraging, breeding and migration. Where underwater noise and artificial light have the potential to affect biologically important behaviours of threatened seabird species, effective control measures will need to be in place.

There are several species of seabirds that are known to be present in the Otway Basin. Some of these species such as albatross and petrels, and penguins, are listed as Matters of National Environmental Significance and are protected under the EPBC Act. Many seabird species utilise the area for biologically important behaviours such as foraging, breeding and migration.

The following species are known to occur within the Environmental Planning Area and exhibit one or more of these important behaviours:

- | | | |
|---------------------------|--------------------------|----------------------------|
| • Caspian tern | • Common-diving petrel | • Greater crested tern |
| • Flesh-footed shearwater | • Great-winged petrel | • Short-tailed shearwater |
| • Little penguin | • Pacific gull | • Sooty shearwater |
| • Shy albatross | • Soft-plumage petrel | • White-faced storm petrel |
| • Wedge-tailed shearwater | • White-capped albatross | |
| • White-fronted tern | • Black-faced cormorant | |

Marine turtles are highly migratory and rely on both marine and terrestrial habitats. Although they may occur within the Environmental Planning Area, no habitat critical to their survival occurs in the waters off southern Australia and they are not known to exhibit any identified biologically important behaviours in this area. The closest biologically important areas for marine turtles are located south of Brisbane, QLD, and at Shark Bay, WA. Even though the presence of individuals within the area is expected to be of a transient nature, the potential impacts of the Otway Exploration Drilling Program on marine turtles has been assessed, as they are listed as Matters of National Environmental Significance and are protected under the EPBC Act.

The full Seabirds, Penguins and Marine Turtles information sheet, including examples of mitigation measures, is available in the document library of the consultation hub.

Other Marine and Coastal Users

The Environment Plan will include an assessment of potential impacts and risks to other marine and coastal users that may arise from the exploration drilling program. This assessment has currently identified a number of marine and coastal users and values including recreation and tourism, commercial shipping, petroleum activities, renewable energy, defence activities, commercial fishing and cultural heritage.

The Otway Exploration Drilling Program may affect the activities of other marine and coastal users. For example, the physical presence of seabed survey vessels, the drilling rig and support vessels used for the activity, and the establishment of exclusion zones, may result in the displacement of other marine users engaging in activities such as commercial fishing.

Other short-term petroleum activities, for example, Vertical Seismic Profiling (VSP), have the potential to cause additional displacement if conducted in close proximity to coastal areas, with sound emissions from VSP limited to a maximum of 20 hours per well.

Exclusion zones will be established to support safe operations. These zones allow for anchors, mooring chains and wire to be placed within the operational areas during the drilling program and prevent interactions or collisions with equipment or between vessels.

All potential drilling locations will be confined to water depths between 35 - 670 m. Recreational diving is likely to be restricted to coastal waters in depths <18 m but with more advanced diving possible to 40 m. Water depths within the operational areas are mostly beyond the recognised maximum recreational diving depth of 40 m, which is also an unlikely depth for recreational swimming. The sound generated by the activity has the potential to reach shallower waters if the drilling activity is in the northern portion of permit VIC/P79.

The full Other Marine and Coastal Users information sheet, including examples of mitigation measures is available in the document library of the consultation hub.

Emissions and Discharges

The EP will include a detailed assessment of potential impacts and risks arising from the air emissions and planned discharges associated with the Otway Exploration Drilling Program. Activities conducted as part of the Otway Exploration Drilling Program will result in emissions to the atmosphere, as well as discharges to the marine environment.

A preliminary assessment of potential impacts associated with emissions and discharges has identified:

- Air emissions from seabed survey vessels, the drilling rig and support vessels have the potential to result in localised changes in air quality.
- Planned discharges from survey vessels, the drilling rig and support vessels have the potential to result in localised changes to water quality that will quickly dissipate in the water column.
- Discharges from drilling operations, including drilling fluids and rock cuttings, cement, and small volumes of hydraulic fluid from testing subsea equipment, have the potential to result in localised changes to water and sediment quality.

Historical Military Ordnance Risk (Unexploded Ordnance)

The EP will include an assessment of impacts and risks associated with historical defence activities in the area, including the potential presence of unexploded ordnance.

Both permit areas overlap a historic air-to-air firing range which the government has classified as having a Slight Potential for unexploded ordnance (UXO) presence, with most ammunition used in this area being considered low risk.

There is no overlap between the permit areas and historic offshore UXO sea dumping sites. The closest sea dumping site to either permit area is located 21 km from T/49P.

The full Historical Military Ordnance Risk information sheet, including examples of mitigation measures, is available in the document library of the consultation hub.

Contact us

ConocoPhillips Australia values consultation and feedback and invites consultation with individuals, groups and organisations potentially affected by the proposed activities to help inform the development of the EP.

You are invited to provide feedback, request a meeting and ask questions on the proposed activity by contacting us in one of the following ways:

E: otway@conocophillips.com

T: 07 3182 7122

PO BOX 1243, MILTON, QLD, 4064

conocophillips.com.au



ConocoPhillips
Australia